

Burnfoot Community Consultation - Welcome

Scottish Borders Council welcomes you to this community event and wants to hear your ideas on how to make Burnfoot better for walking and cycling, improve local access to people with mobility issues and make public spaces more attractive throughout.



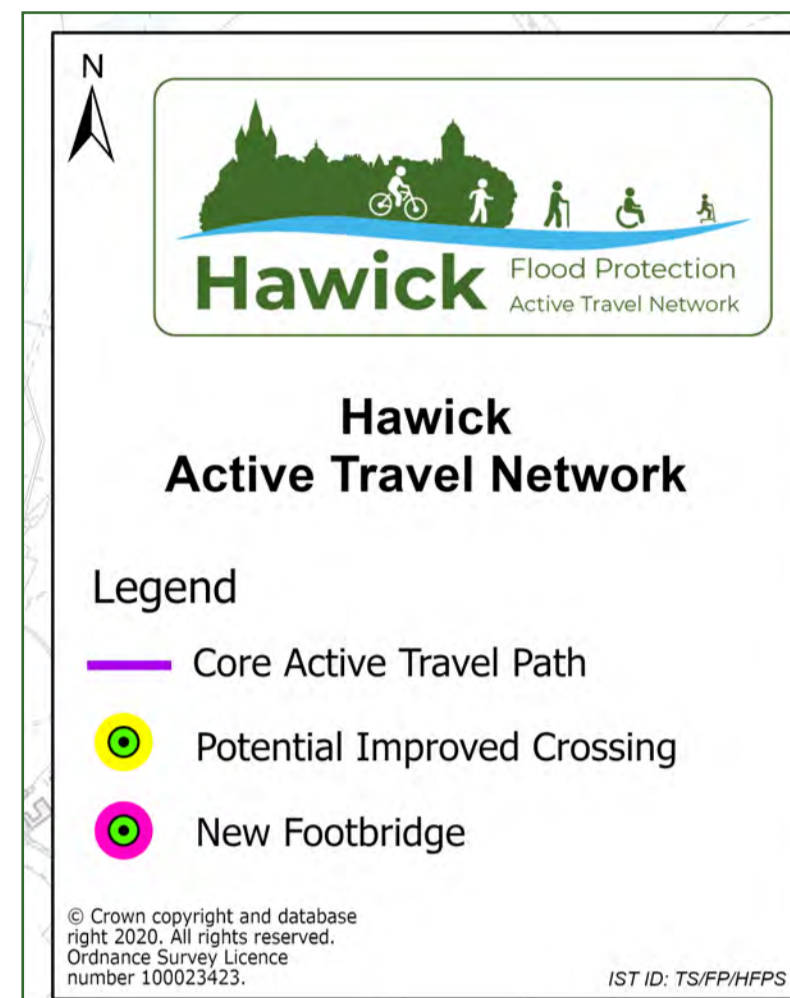
Representatives from Scottish Borders Council, CPE Consultancy and the project funders, Sustrans, are here to listen and chat to you.

CPE
CONSULTANCY



Please feel free to discuss your thoughts or write them down on the maps and questionnaires provided.

Burnfoot Community Consultation - Active Travel Network Overview



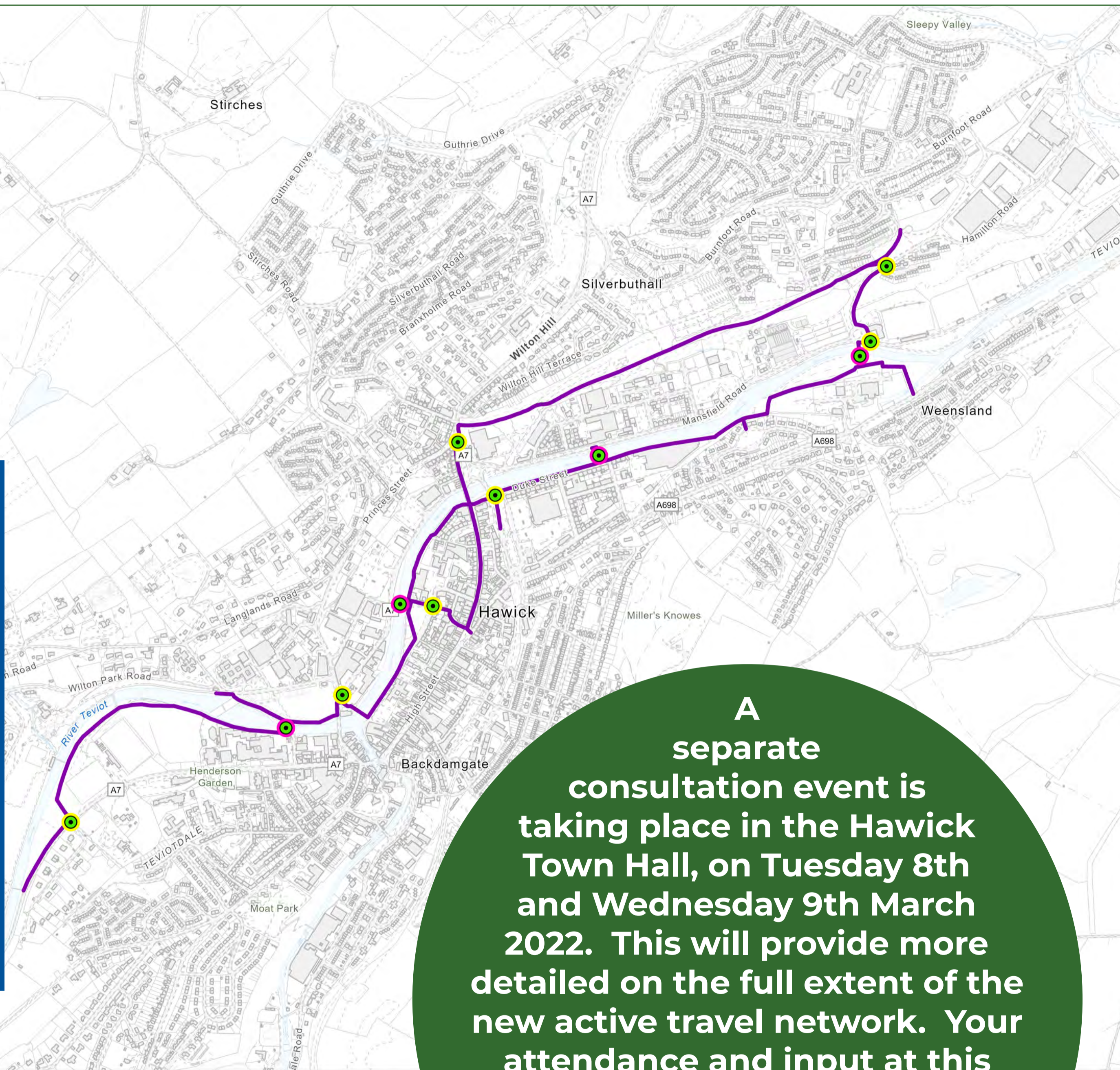
Hawick Flood Protection
Active Travel Network

Hawick Active Travel Network

Legend

- Core Active Travel Path
- Potential Improved Crossing
- New Footbridge

© Crown copyright and database right 2020. All rights reserved. Ordnance Survey Licence number 100023423. IST ID: TS/FP/HFPS

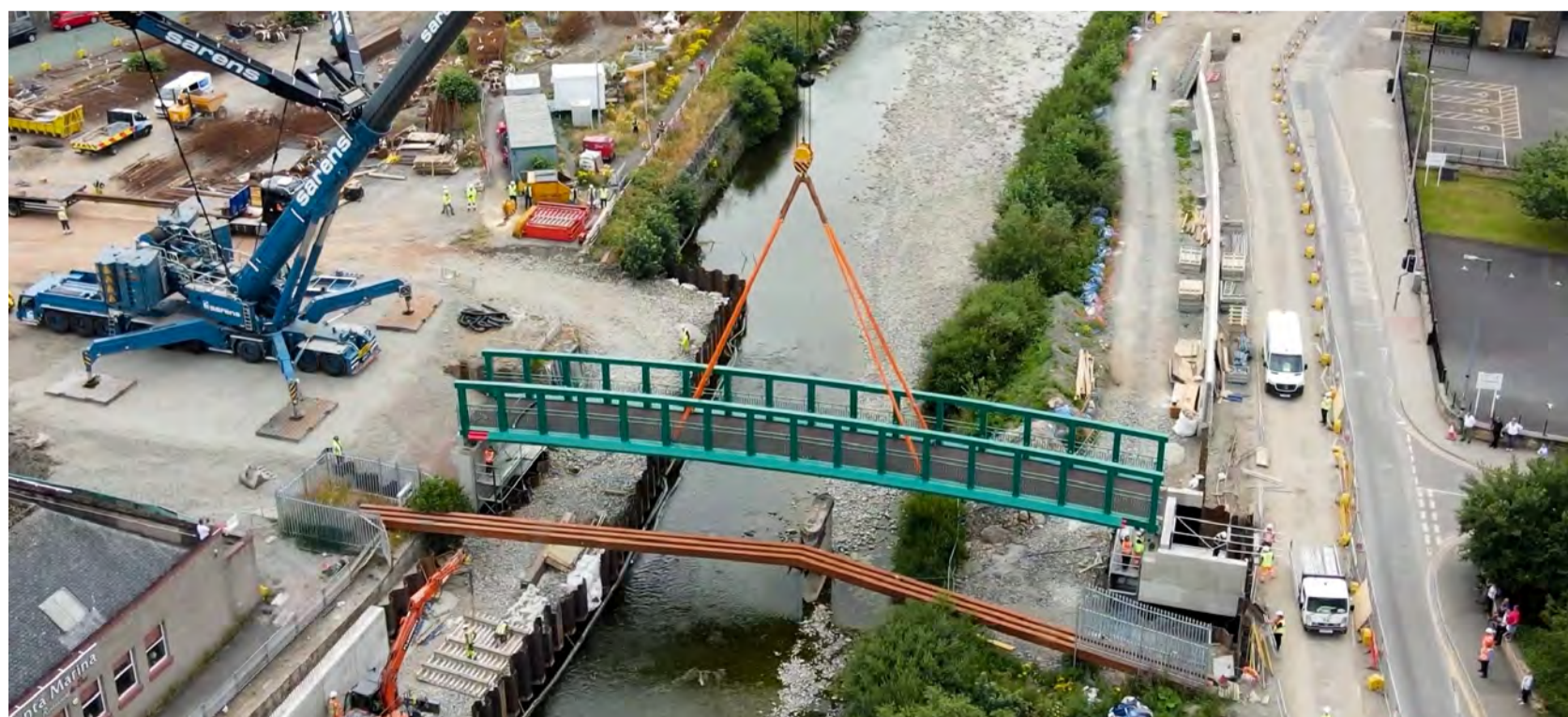


As part of the Hawick Flood Protection Scheme, new paths for walking, cycling and wheeling will be built throughout Hawick with the main route following the line of the River Teviot.

A separate consultation event is taking place in the Hawick Town Hall, on Tuesday 8th and Wednesday 9th March 2022. This will provide more detailed on the full extent of the new active travel network. Your attendance and input at this event would be very welcome. The event will be open between 9am and 8pm on both days.

The plan is showing full details of the proposed new network:

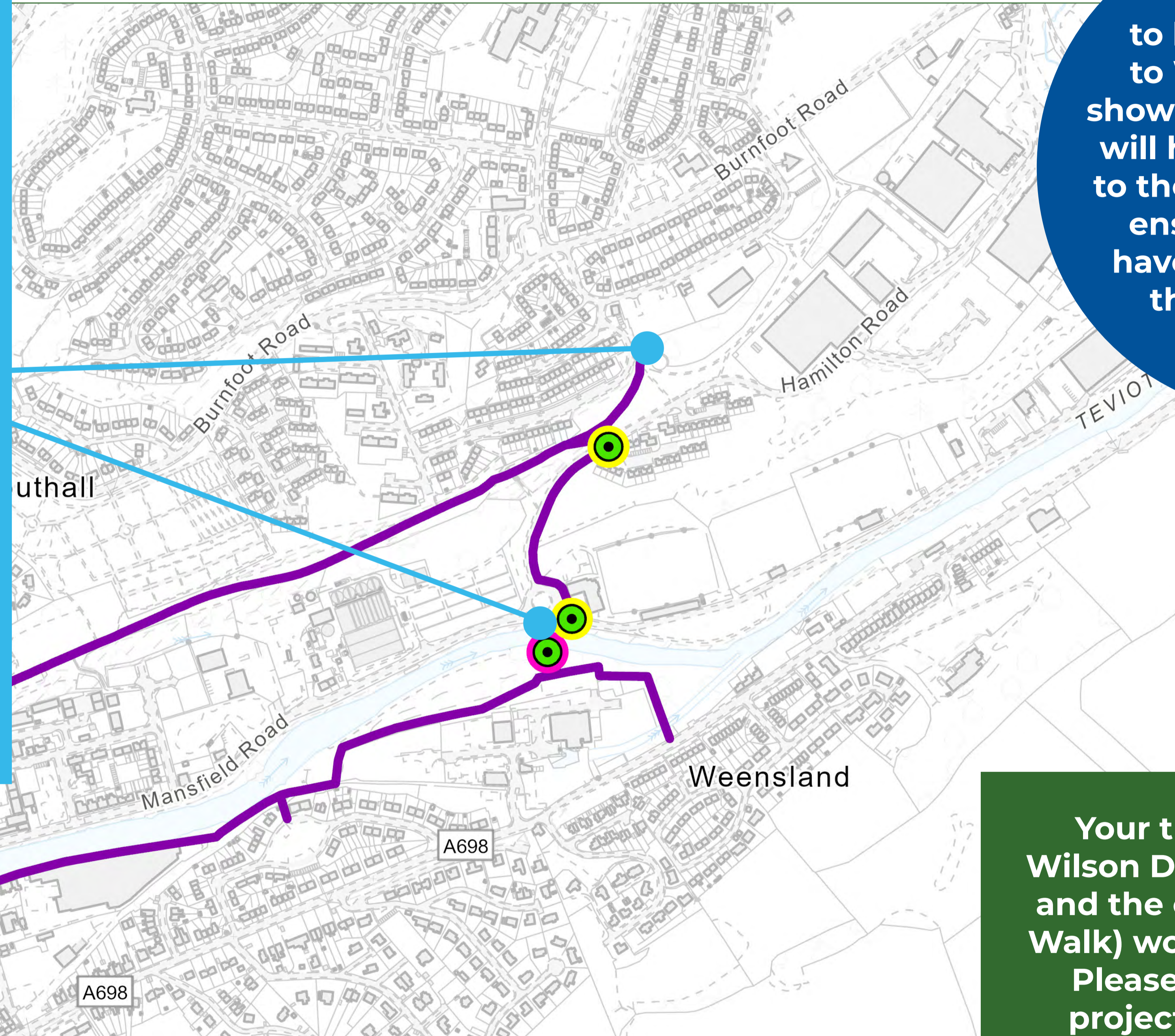
- 4m wide paths
- New bridges
- Safer crossings
- Safer access to Hawick High School



Burnfoot Community Consultation - Paths Linking Burnfoot

The new Active Travel Network includes wider paths on Hamilton Road and along the old railway line (Waverley Walk). A new footbridge linking the bottom end of Mansfield Road to the Weensland area is also being considered.

Currently there are no direct links from Burnfoot to these paths for those with mobility issues.



It is proposed to link these paths to Wilson Drive, as shown on the map. This will help link Burnfoot to the rest of the town, ensuring residents have equal access to the active travel network.

Your thoughts on linking Wilson Drive to Hamilton Road and the old railway (Waverley Walk) would be very welcome. Please discuss it with the project team or make any comments you have on the questionnaire provided.

Burnfoot Community Consultation - Plans for Burnfoot

Why Burnfoot?

It is important to the Active Travel Network team to improve the links to town and make your everyday journeys safer and create nicer and more attractive spaces in the neighbourhood for you and your family!



How Much?

£500,000
investment to make improvements within Burnfoot.



What and Where?

This consultation is the first step in working with you to find areas where improvements can be made. Please see other boards for potential locations and let the team know your thoughts.

We need your ideas to make the best use of the money available.



When?

Improvements to be finished by the end of 2023 to tie in with the completion of the rest of the Hawick Active Travel Network and the Hawick Flood Protection Scheme.

Burnfoot Community Consultation - Example Improvements



Giving cyclists more space and providing storage / parking to make it easier to cycle daily.



Limiting road space to slow down car movement and give more room to people and cyclists.



Reducing the turning space for cars at a corner to allow easier crossing.



Using planters, trees and creative designs to change how a place feels.



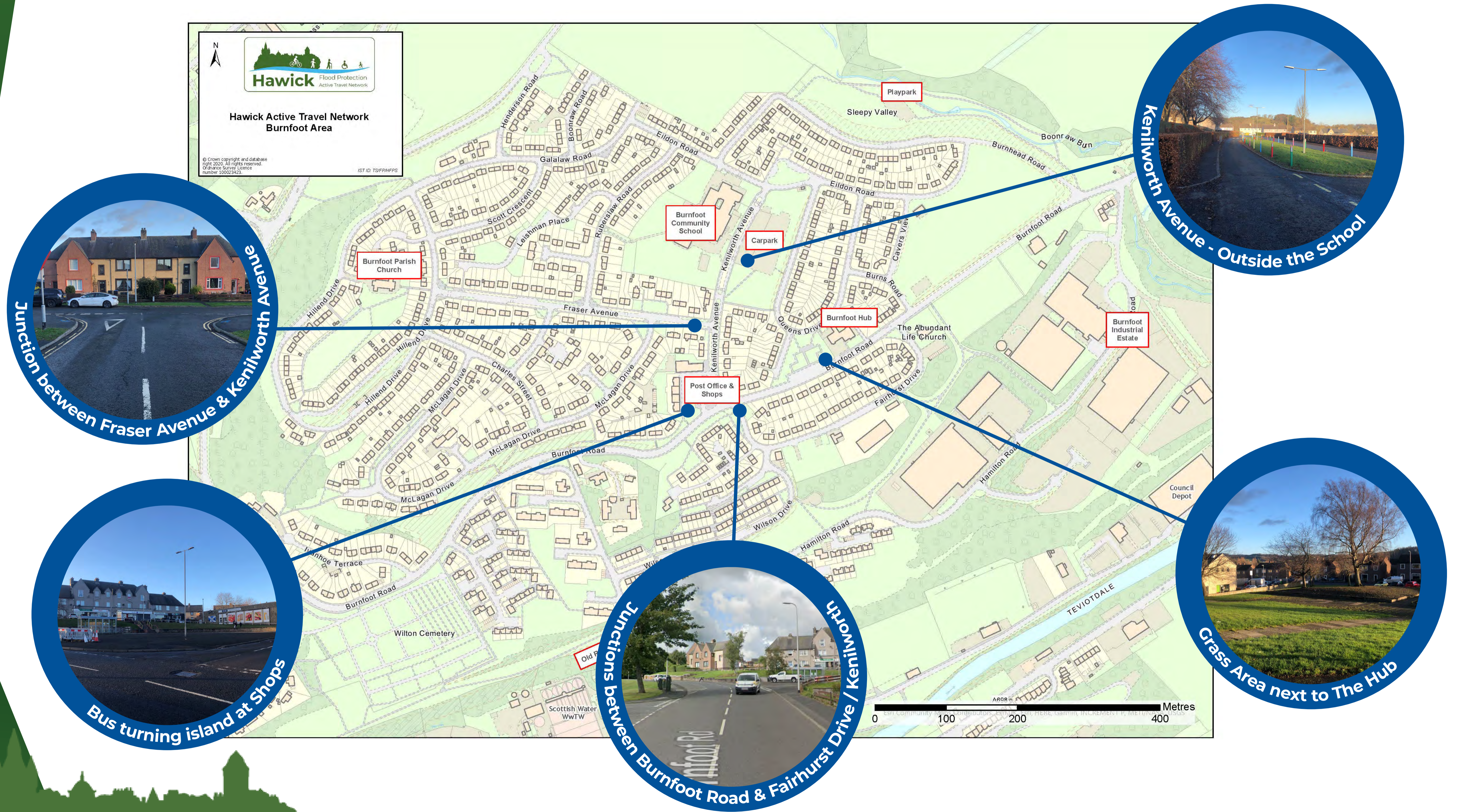
Creating Community areas with the inclusion of benches and seating.



Working with local artists, history and ideas to make a neighbourhood feel distinctive and loved.



Burnfoot Community Consultation - Possible Locations



Burnfoot Community Consultation - Your Ideas

What routes do you walk or cycle? Think about your route to school, The Hub, the Shops or into town.

Something to think about

Are there any areas within the estate that would benefit from upgrading?

Is there anything on these routes that make it difficult?

Are there any improvements that could be made to these routes?



Having viewed the examples of typical improvements that could be made and some of the possible locations for these, please share your views with the project team at this event and feel free to mark your suggestions on the paper copies of the above map that have been provided for your use.

Burnfoot Community Consultation - Current Ideas



We would also welcome your opinion on initial ideas from the project team. These are marked on the plan.

Legend

- Current Proposed ATN
- Possible Link to ATN
- On Street Link to ATN
- Footway Widening
- Larger Scale Change
- Removal of Steps
- Improved Crossing Points
- Possible Place Making

Burnfoot Community Consultation - What Next?

Next steps:

1. Your feedback and suggestions will be registered and reviewed by the project team

2. A list of possible improvements will be prioritised to identify which improvements will provide the most benefit to the community.

3. Further consultation with the Burnfoot community may be required as part of this process.

If you wish to make any further comments at a later date, this can be done via the following methods:

Email: hawickfloodps@scotborders.gov.uk
Phone: 01835 825095

Facebook: @hawickfloodprotectionscheme

Twitter: @HawickFPS

Instagram: @hawick_flood_protection

To view the information presented today online please visit:
www.hawickfloodscheme.com

Burnfoot Community Consultation - Frequently Asked Questions

What is the Active Travel Network?

It is a shared-use path that runs along the entire length of the Flood Protection Scheme. It can be used to walk, wheel or cycle to various locations within the town, and is aimed at ensuring that all routes are suitable for a competent 12-year-old to use safely unaccompanied. Making day-to-day journeys by walking or cycling is an effective way of bringing more physical activity into our everyday lives. It can help the community to get healthier and help us lead longer and more independent lives.

How do I have my say?

The Project Team is running consultation events in Burnfoot (23rd and 24th February) and Hawick town centre (8th and 9th March). You can also contact the team on

hawickfloodps@scotborders.gov.uk
or
018535 825095.

Why is the consultation taking place?

This consultation is a key event in the Burnfoot area design. The purpose of the consultation is to get ideas from local residents, and businesses on the early concepts.

The team is looking to improve the streets and adjacent spaces to suit local people, visitors and businesses. It is important to ensure that the proposals make the best use of the street space to cater for all activities and all users.

What does 'improved public spaces' mean?

Improving public spaces means making specific locations in the town more attractive and pleasant to spend time in and travel through. This can be achieved with using different materials, plants, trees, art, providing space for activities and many other possibilities.

Will cycle parking be provided along the route?

Yes, cycle parking will be provided at key locations along the route. We would like your feedback on where those locations could be.

Who is delivering the project?

The project is being delivered by Scottish Borders Council in partnership with Sustrans, CPE Consultancy and Jacobs.

Could this money be spent on something else?

The funding comes from 'Places for Everyone' fund which is managed by Sustrans and provided by Transport Scotland. The Council successfully applied for this funding to be spent on the Active Travel Network in Burnfoot and Hawick.

What is a protected cycle lane / segregated cycleway?

A protected cycle lane, or segregated cycleway, is a cycle lane that is separated from the road by a kerb or similar and from the footway by a level difference. This gives cars, cyclists and pedestrians their own space and minimises contact between these users.